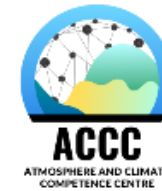




Funded by  
the European Union



# COST Action

*Pan-Eurasian Experiment – Europe – Near Europe*

*Neighbourhood countries*

*Earth System Research Network*

## PEEX-EU-NEN-ReN

**Hanna Lappalainen & Alexander Mahura, University of Helsinki (UHEL)  
& the PEEX COST Action partners/ teams**

*PEEX Seminar (hybrid), 14 April 2026*

# COST Action **PEEX-EU-NEN-ReN** *Pan-Eurasian EXperiment – Europe – Near Europe Neighbourhood countries Earth System Research Network*

COST Action proposal subm. **Oct 2026**  
Decision to be announced: **Spring 2027**

Proposal OC-2025-1-28967 declared non-eligible



Dear Dr Hanna Lappalainen,

We inform you that the Proposal OC-2025-1-28967 - Pan-Eurasian EXperiment – Europe – Near Europe Neighbourhood countries Earth System Research Network has been declared non-eligible and can no longer be considered in the evaluation and selection process.

This decision was taken with the following justification:

According to COST Implementation Rules and related documents in force for the Open Call OC-2025-1: i.e.

1. the COST document 088/21 "Rules and Principles for COST Activities" [www.cost.eu/Rules\\_And\\_Principles\\_for\\_COST\\_A/](http://www.cost.eu/Rules_And_Principles_for_COST_A/)[www.cost.eu/Rules\\_And\\_Principles\\_for\\_COST\\_A](http://www.cost.eu/Rules_And_Principles_for_COST_A/)
2. the COST document 101/21 "COST Action Proposal Submission, Evaluation, Selection and Approval" [http://www.cost.eu/proposal\\_sesa](http://www.cost.eu/proposal_sesa)
3. the COST Open Call – Applicants' Guidelines (Submission, Evaluation, Selection and Approval - SESA)

To be eligible, a proposal for a COST Action shall:

"Be anonymous:

proposals may not contain any direct or indirect reference to people and/or their institutions participating in the Network of Proposers (Main or Secondary Proposers). This means that names of proposers or their institutions should neither be explicitly mentioned, nor be potentially identifiable through, e.g., links to web pages or through references to their role and/or participation in existing or ended projects, grants, networks that are mentioned in the proposal."

Based on the above, the COST Association has declared your proposal non-eligible, on the basis of the non-fulfilment of the anonymity criterion. The reason is that in the Technical Annex there are references to initiatives and groups where proposers are involved. These can be found in Section 1.C..

This decision is valid also in potential cases that non-eligibility was not spotted in previous submissions.

We thank you for your interest and submission of a proposal to the COST Open Call.

Best regards,

COST Association

# COST Action **PEEX-EU-NEN-ReN**

## *Pan-Eurasian EXperiment – Europe – Near Europe Neighbourhood countries Earth System Research Network*

The resubmission process will begin after the summer. We hope you will still be involved.

- *Number of Proposers: **35 tbc***
- *Gender Distribution of Proposers: **40.0% Females & 57.1% Males***
- *Number of Young Researchers and Innovators: **6***
- *Core Expertise of Proposers: Distribution by Sub-Field of Science:*
  - ***71.4%** - Earth and related Environmental sciences*
  - ***28.6%** - Agriculture, Forestry, Fishery, Chemistry sciences, economics, business, others*
- *Institutional distribution of Network of Proposers:*
  - ***80.0%** - Higher education, research-performing & associated organizations (**28**)*
  - ***20.0%** - Governmental organizations or agencies, non-for-profit organizations or associations, SMEs (**7**)*
- *COST Full Member (**15**): **Armenia, Bulgaria, Czech Republic, Denmark, Estonia, Finland, Germany, Greece, Iceland, Italy, Latvia, Norway, Romania, Switzerland, Ukraine** + Other countries (**2**): Jordan, Kazakhstan*
- *COST Inclusiveness Target Countries (ITC): **53.33 %***

# Overall Research Coordination Objective

# COST Action

- To establish COST Action as a multidisciplinary research network to answer PEEEX large-scale science questions, which are supporting the development of regional strategies for climate change adaptation and mitigation, air quality, impacts on the environment and population, their living conditions and health and ecosystem services.

# Specified Scientific & Operational Objective

- COST Action Working Groups (WGs) and their specified scientific and operational objectives to be implemented through WGs meetings, online seminars/ webinars, annual sci. conferences, e-platforms, mobilities/ STSMs, YSSs, trainings, policy briefs.

# Capacity-Building Objectives

- (1) New knowledge sharing; (2) Training of young scientists; (3) Transfer of knowledge; (4) Disseminating research results; and (5) International networking.

- To open new opportunities for research collaboration in atmospheric, Earth's and environmental sciences & to carry out joint research collaboration through mobilities of PhD students between COST Action Partners
- To assess the current environmental observations between the COST Action Partners & to define actions towards harmonisation based on the Global-SMEAR concept
- To access knowledge gap for needs of modelling & to improve integrated multi-scales and -processes simulations and modelled data analyses
- To educate new generation of young researchers & to introduce novel e-learning assets between involved COST Action Partners

- New potential research and educational initiatives for PhD students' and young researchers' projects
- Completed short-term scientific missions between COST Action Partners, and young scientist schools which support the completion of the PhD studies
- Established research and innovation network between COST Action Partners, and expanded by inviting new interested universities and organisations
- Organised webinars/ workshops/ conferences on research, observations / data harmonization and educational topics based on PEEEX and ACCC agendas and interactions between the COST Action Partners
- Widely disseminated (during and beyond) COST Action activities and results to science community, stakeholders e.g., NGOs, SMEs, and general public

PEEX (Pan-Eurasian Experiment program;

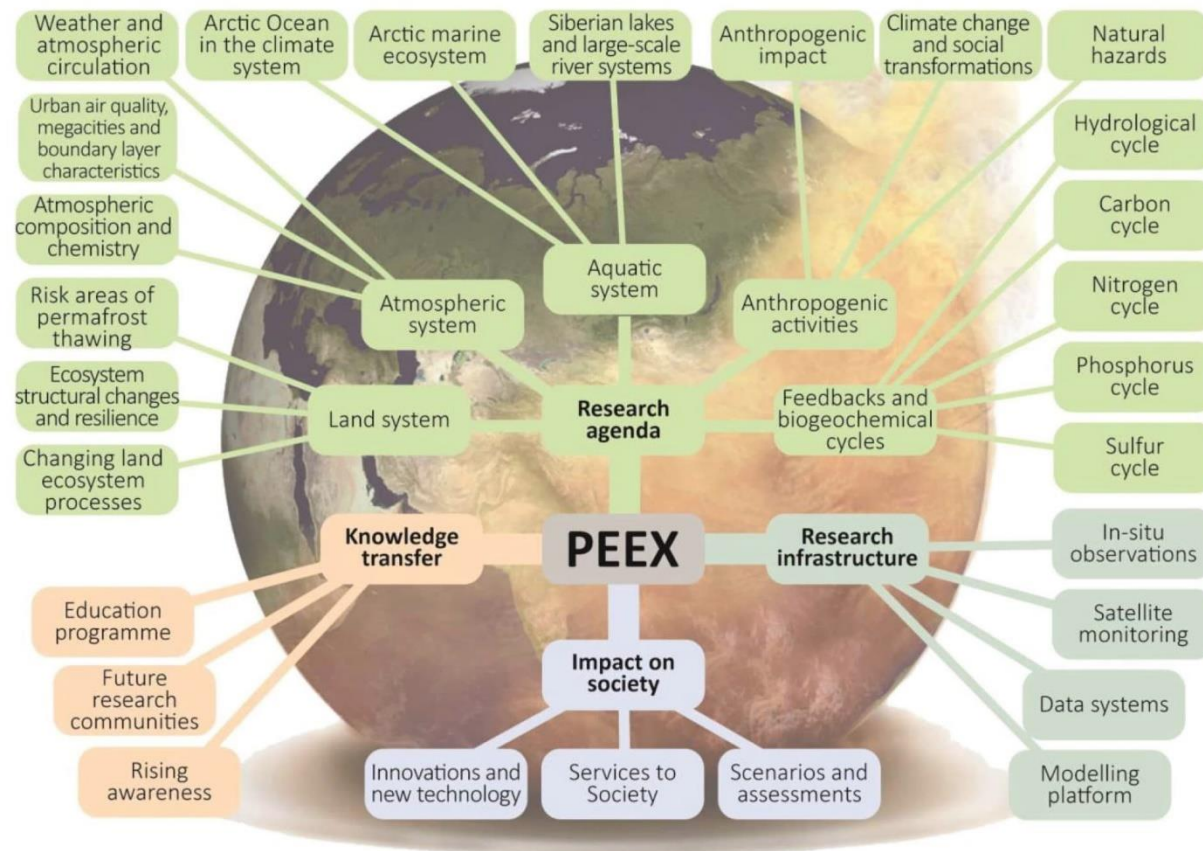
<https://www.atm.helsinki.fi/peex>)

research agenda is focused on understanding the complex interlinked **land–atmosphere–ocean–society system** in the EU-NEN region context

& introduces **large-scale research questions** (15 in total)

& **key topics** summarised for

- Land system
- Atmospheric system
- Aquatic system
- Anthropogenic activities
- Feedbacks – interactions



PEEX framework for research agenda, research infrastructures, impact on society and knowledge transfer

ACCC (Atmosphere and Climate Competence Center; <https://www.acccflagship.fi>)

Impact Programs (IP):

**IP1-IP2:** Carbon sinks of the agricultural and forested lands

**IP3:** Climate neutrality of the companies

**IP4:** Climate neutral cities and health

**IP5-IP6:** Novel carbon and atmospheric observation techniques

**IP7:** Air pollution cocktail in megacities

**IP8:** Climate analytic solutions

**IP9:** New collaboration via the climate change – air quality forum re-named as supporting policies and practices

**IP10:** Operational phase of PEEEX Program

**IP11:** Global-SMEAR for the Earth Observatory

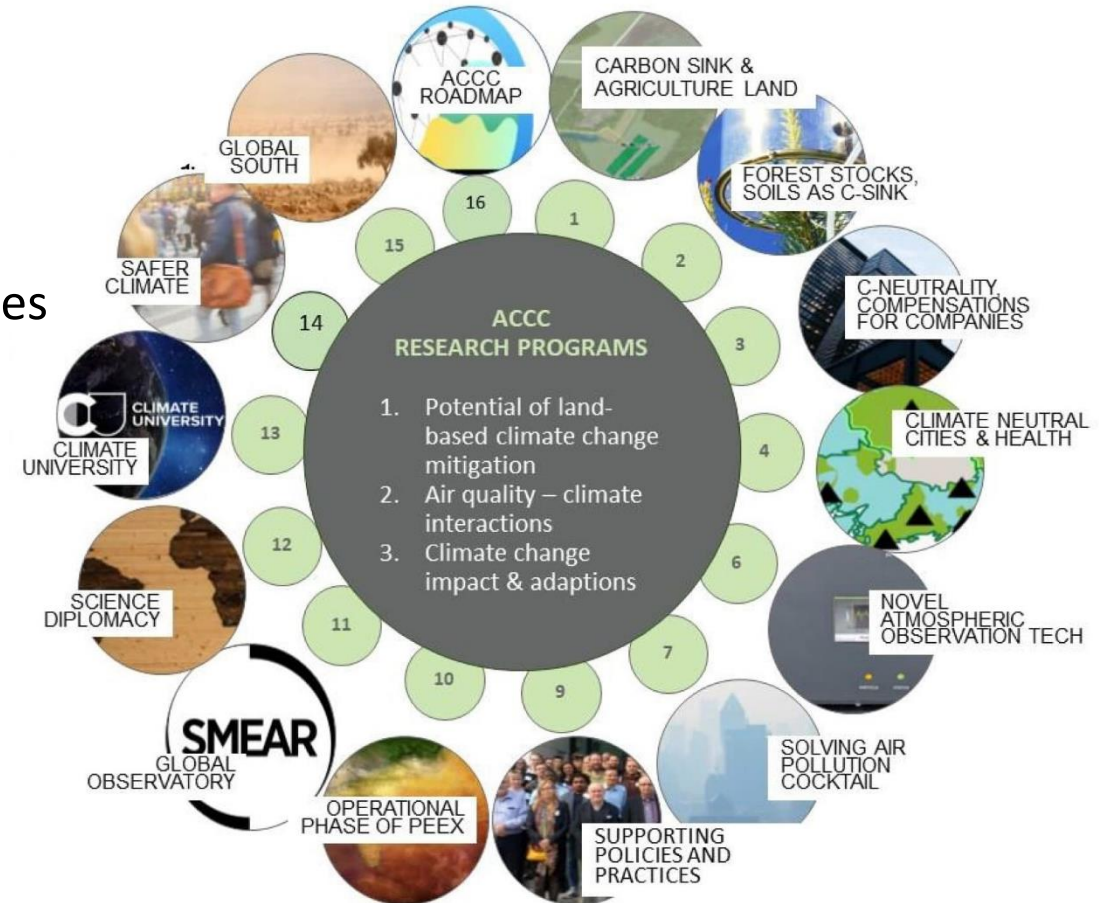
**IP12:** Science diplomacy

**IP13:** Climate University with massive online education

**IP14:** Safer Climate Initiative

**IP15:** Global South

**IP16:** ACCC Roadmap



- **WG-1: Research**
- **WG-2: Observations & Data**
- **WG-3: Integrated Modelling**
- **WG-4: Knowledge Transfer**

## OBJECTIVES:

- **O1.1: To better understand the Earth system and the influence of environmental changes in pristine and industrialized Pan-Eurasian environments**
- **O1.2: To better understand the processes relevant to climate change and air quality in the European / Eastern Europe geographical domain**

## TASKS:

- **T1.1. List of ongoing research activities and critical overview of the current knowledge on information from the COST Action members studies in the Europe and Near East European region**
- **T1.2. Recommendations for future studies**

## DELIVERABLES:

- **D1.1. Report for the ongoing activities and integrated research (M24, R, PU)**
- **D1.2. Report for the recommendations and their distribution to stakeholders: status of current knowledge and approaches for future studies (M42, R, PU)**

## MILESTONES:

- **M1.1. Consensus on research disciplines involved (verification: e-form opened for access; M09)**
- **M1.2. 1st annual science conference (verification: conference organised and carried out; M12)**
- **M1.3. 1st iteration critical overview report and recommendations (verification: draft prepared; M30)**

## OBJECTIVES:

- **O2.1.** To promote development of coordinated and comprehensive in-situ observation
- **O2.2.** To collect information of the current observations (metadata), used standards of the COST Action Partners

## TASKS:

- **T2.1.** Knowledge gap analysis
- **T2.2.** Recommendations from science to service applications based on observations

## DELIVERABLES:

- **D2.1.** Gap analysis results (M18, R, PU)
- **D2.2.** Recommendations to service applications (M36, R, PU)

## MILESTONES:

- **M2.1.** Established e-form for collecting info. on current observations (verification: e-form opened; M09)
- **M2.2.** Recommendations communicated with stakeholders (verification: materials collected; M24)

## OBJECTIVES:

- **O3.1. To implement the validated and harmonised data products in models of appropriate spatial and temporal scales and topical focus**
- **O3.2. To collect info on existing and newly developed modelled-based datasets and archives with continuous comprehensive dataflows**

## TASKS:

- **T3.1. Knowledge gap analysis to identify the needs for modelling**
- **T3.2. Hemispheric-regional-subregional-urban-local scales modelling**
- **T3.3. Analyses of performed multi-disciplinary modelling studies on multi-scales for policy applications**

## DELIVERABLES:

- **D3.1. Summary of knowledge gaps and concept for seamless/ integrated modelling (M24, R, PU)**
- **D3.2. Summary of modelling applications for Pan-Eurasian region (M42, R, PU)**
- **D3.3. Recommendations from science to service applications based on modelling (M45, R, PU)**

## MILESTONES:

- **M3.1. Assessment of stakeholders' needs in modelling (verification: e-form opened; M18)**
- **M3.2. Assessment of modelling applications (verification: information collected/ ready for analysis; M33)**
- **M3.3. First version of recommendations drafted (verification: draft is publicly available; M42)**

## OBJECTIVES:

- **O4.1. To educate next generation of multidisciplinary experts and scientists capable of finding tools for solving grand challenges (capacity building)**

## TASKS:

- **T4.1. Overview of ongoing PhD student projects at the COST Action Partners' institutions**
- **T4.2. Organization of Short-term Scientific Missions, STSMs**
- **T4.3. Young Scientist Schools, YSSs**

## DELIVERABLES:

- **D4.2.1. Annual summary reports on completed STSMs (M12, M24, M36, M48)**
- **D4.3.1. YSS on Atmospheric Observations of Aerosols, Clouds and Trace Gases (M18)**
- **D4.3.2. YSS on Advanced Analysis of Atmosphere-Surface Interactions and Feedbacks (M30)**
- **D4.3.3. YSS on Multi-Scales and -Processes Integrated Modelling, Obser. and Assessment for Environ. Applic. (M42)**

## MILESTONES:

- **M4.1. Current state of ongoing PhD projects overviewed (verification: information collected; M06)**
- **M4.2. First year STSMs completed (verification: summary report is publicly available; M13)**
- **M4.3. YSS completed (verification: all materials are publicly available; M19)**

*will be promoted on 3 levels between:*

➤ **Research fields**

*(ecology – physics – technology – chemistry – meteorology – geography – social sciences)*

**(WG-1)**

➤ **Research methodologies**

*(theory – modelling – experiments – observations, in-situ observations, remote sensing observations; qualitative and quantitative research)*

**(WGs 2,3)**

➤ **Universities, research institutes, companies and bodies at different policy- and decision-making levels**

**(WG-4)**

- Phases
- Timeline
- Management

Phase-I (year 1) : **Inventory**

Phase-II (year 2-3) : **Development, Assessment & Applications**

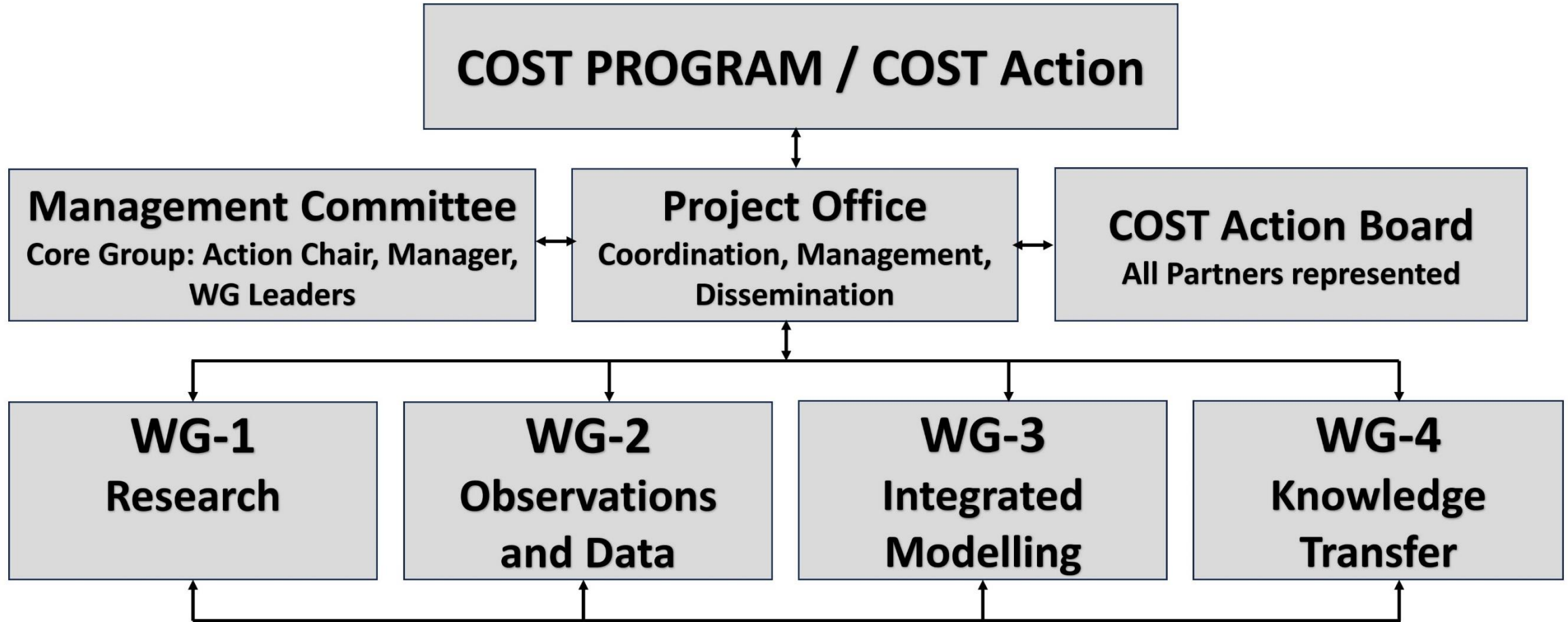
Phase-III (year 4) : **Synthesis and Dissemination of Action results**

Years	1				2				3				4			
Quarters	1	2	3	4	1	2	3	4	1	2	3	4	1	2	3	4
Phases	I	I	I	I	II	II	II	II	II	II	II	II	III	III	III	III
MC-Meetings		X		X		X		X		X		X		X		X
WG-Meetings				X		X		X		X		X		X		X
Workshops/ Conferences			X				X				X				X	
Schools							X				X				X	
Short-Term Science Missions			X	X	X	X	X	X	X	X	X	X	X	X		
WG reports/ papers				P		R		P		R		P		R		P
Annual Reports to COST				X				X				X				X
Final Report to COST																X
Public Website	X	X	X	X	X	X	X	X	X	X	X	X	X	X	X	X

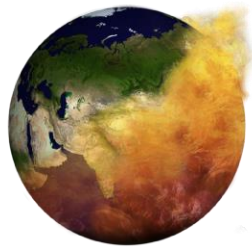
**COST Action Phases (by years and quarters) with activities:**

**MC & WG meetings, annual conferences/ workshops, YSSs, STSMs, WGs reportings, annual reports to COST, & website.**





**COST Action workflow between:  
COST Program, Project Office, Management Committee, Board, and Working Groups (WGs).**



Pan-Eurasian Experiment

**PEEX**

## CONTACTS for Coordination

Dr. Hanna K. Lappalainen [hanna.k.lappalainen@helsinki.fi](mailto:hanna.k.lappalainen@helsinki.fi)

Dr. Alexander Mahura [alexander.mahura@helsinki.fi](mailto:alexander.mahura@helsinki.fi)

Prof. Alexander Baklanov [abaklanov@nbi.ku.dk](mailto:abaklanov@nbi.ku.dk)

Prof. Tuukka Petäjä [Tuukka.petaja@helsinki.fi](mailto:Tuukka.petaja@helsinki.fi)